



# PROTECTION SERVICE FOR MOBILE

## F-Secure Protection Service for Mobile 7.6

2011-12-16  
Partner confidential

# PROTECTION SERVICE FOR MOBILE

---

- Supported platforms:



**SYMBIAN**



**BlackBerry**

## F-Secure PSM support

- ✓ Android 2.2-3.2, and Android 1.6-2.1
- ✓ iOS (iPhone and iPad)
- ✓ Symbian^3, S60 3<sup>rd</sup> and 5<sup>th</sup> Edition
- ✓ Windows Mobile 6.X
- ✓ RIM BlackBerry 5, 6, 7

# PROTECTION SERVICE FOR MOBILE



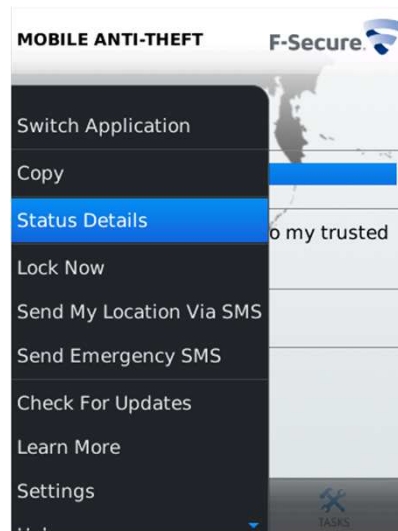
## PROTECTION SERVICE FOR MOBILE



## Security as a Service

- ✓ **Antitheft** protects the device and the data by offering remote lock, wipe, alarm, and locate.
- NEW!** **Self-management portal** for the antitheft management.
- ✓ **Browsing protection** keeps user on the safe side of the internet by checking the URL reputation in the background while browsing.
- ✓ **Parental control** extends the URL reputation to contain categories. Parent may prevent access to certain content categories e.g. to sites containing violent content.
- NEW!** **Application control** widens the parent's ability to control the applications. New applications can be used only after the use has been authorized by the parent.
- NEW!** **Safe applications** prevents the unwanted calls and messages. Parent may also add filters for the children.
- ✓ **Malware protection** keeps the device and the data clean of potentially harmful applications (viruses, trojans, etc.).
- NEW!** **Cloud scanning** extends the local scanning ability with the cloud technology based application reputation.
- ✓ **Automatic updates** check for updates without user interaction thus providing seamless security for all usage situations.
- ✓ **Backup** is a separate product which fits nicely in the prevention of loss story. E.g. in case the device is lost or stolen the device can be safely wiped to remove confidential information without the loss of valuable data.

# PROTECTION SERVICE FOR MOBILE



## Antitheft for Blackberry **NEW!**

- ✓ Remote lock, wipe, locate, and alarm, and local device lock.
- ✓ Integrates with the Anti-Theft Portal (see later in this presentation)
- ✓ Supporting OS v5, v6, and v7 (Anti-theft 1.1 for BlackBerry)



# PROTECTION SERVICE FOR MOBILE

Antitheft

# PROTECTION SERVICE FOR MOBILE

---



Lock screen on Symbian device

## Antitheft

- ✓ **Safeguards personal and confidential data and helps to locate missing phone**
- ✓ **Remote Lock (#lock#)** can be used to lock the device to protect confidential information quickly and easily with a single SMS message.
- ✓ **Remote Wipe (#wipe#)**: As an ultimate safety measure to prevent misuse, it is possible to erase all the data on the phone
- ✓ **Remote Locate (#locate#)**: with locate command you easily locate your phone, or someone who have given you permission for locating
- ✓ **Remote Alarm (#alarm#)**: with alarm you can easily locate misplaced phone. When the phone receives the command it plays a loud noise even if it is in silent model.

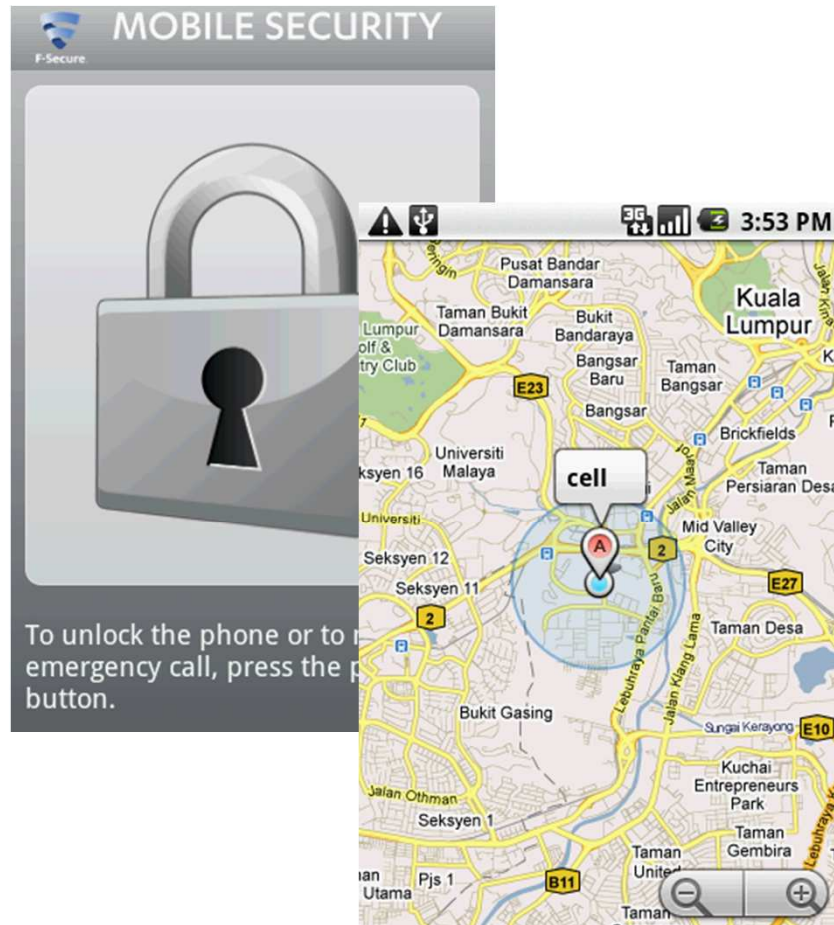


SYMBIAN



BlackBerry

# PROTECTION SERVICE FOR MOBILE



SYMBIAN



BlackBerry

## Antitheft

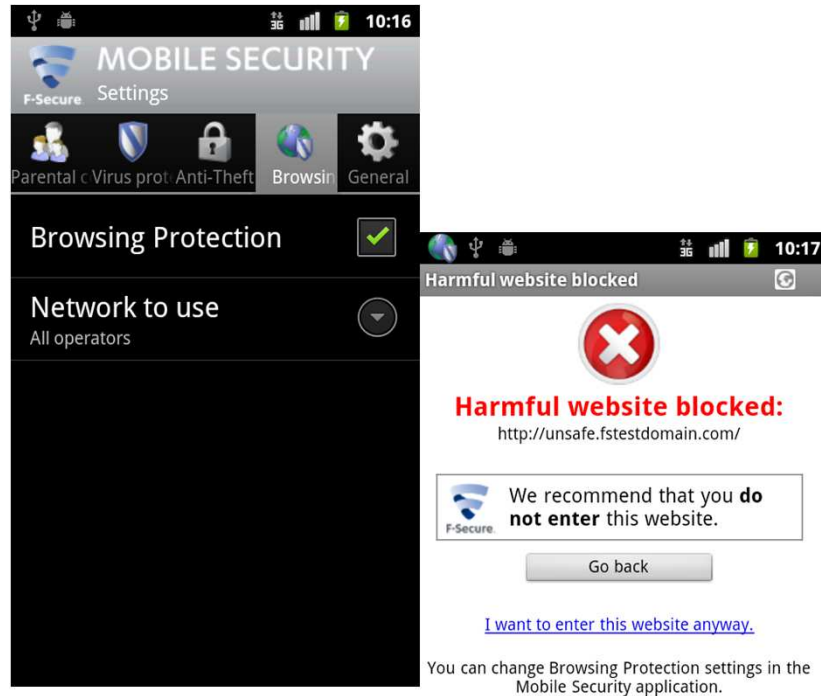
- ✓ **Enhanced Antitheft feature set**
- ✓ **Theft control:** if new SIM is inserted in the device, the device is automatically locked, and SMS is sent to the trusted number. This way the remote commands can be sent to the device.
- ✓ **Anti-Exit:** makes sure that nobody but you can exit or uninstall the security software from your phone. Also available in the standard Anti-Theft.
- ✓ **Centralized management:** “lock”, “wipe”, “alarm” and “reset” commands can be activated centrally as a service through F-Secure Mobile Services portal user interface.

# PROTECTION SERVICE FOR MOBILE

Browsing protection



# PROTECTION SERVICE FOR MOBILE



## Browsing Protection

- ✓ **Visit only safe side of the internet**
- ✓ 1 out of every 35 web pages is harmful or unsafe to visit
- ✓ Internet frauds target the human behaviour instead the device – the frauds work on any platform.
- ✓ Real time protection against internet frauds and phishing
- ✓ Prevents unintentional access to malicious web sites
- ✓ Utilizes the smart cloud technology with zero effect to the smartphone's performance.
- ✓ Tells an understandable explanation of the threat if the site is not secure



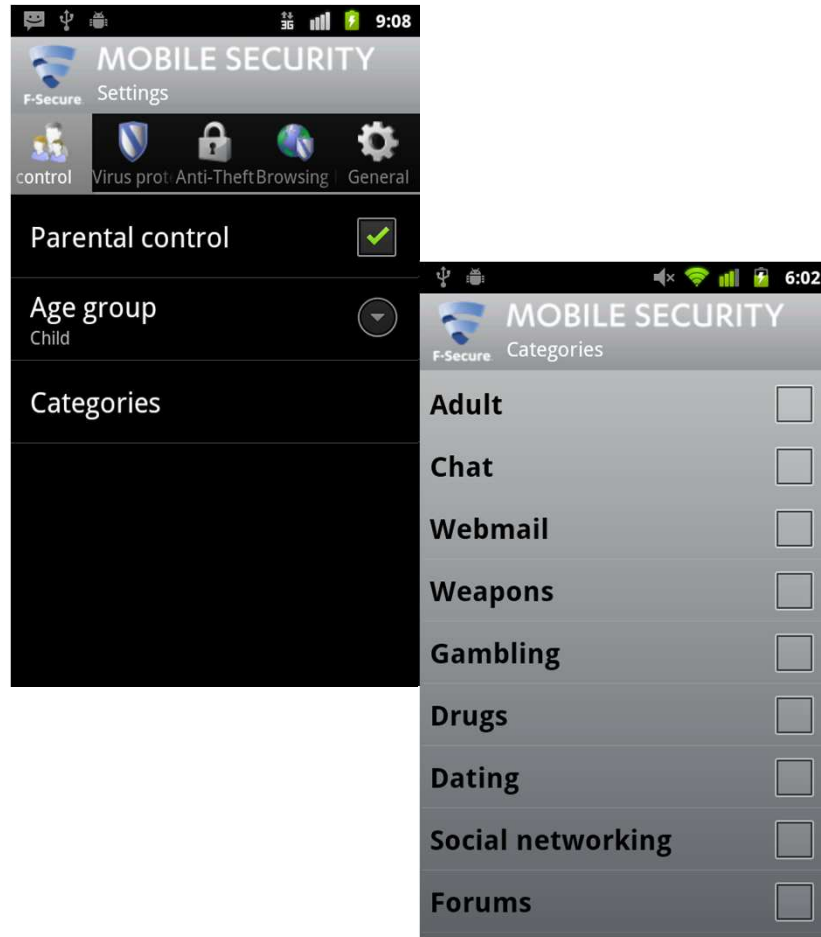
SYMBIAN



# PROTECTION SERVICE FOR MOBILE

Parental control

# PROTECTION SERVICE FOR MOBILE



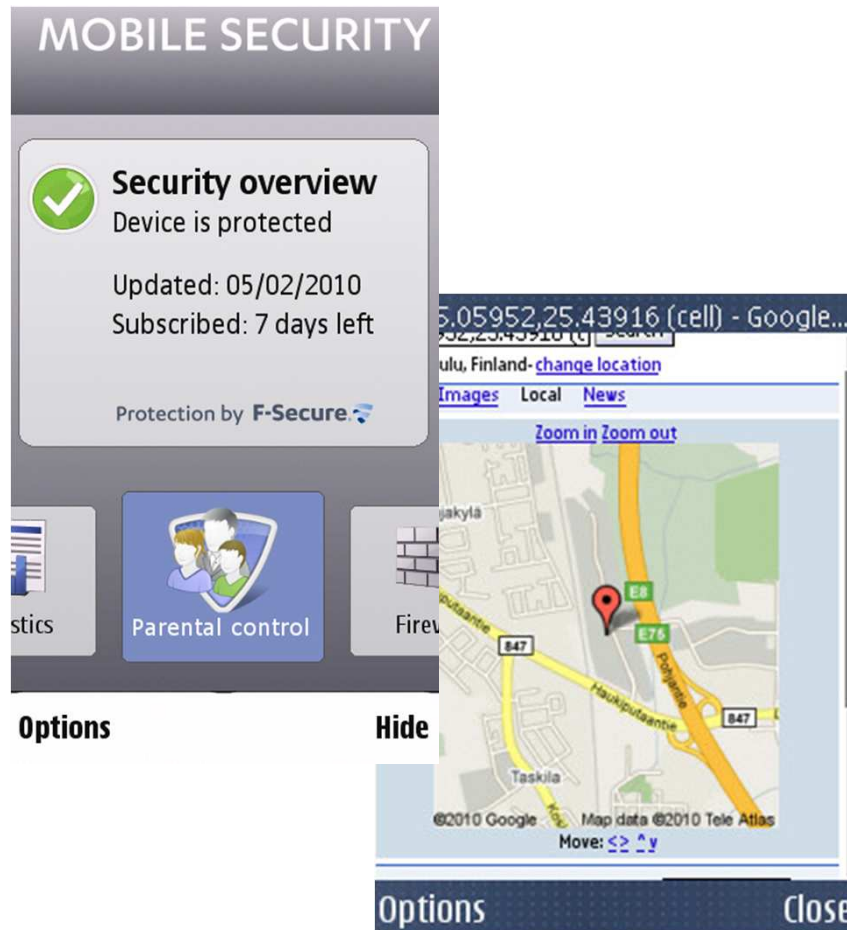
## Parental control (I)

- ✓ **WebControl** keeps children safe from inappropriate web content
- ✓ 1 out of every 10 web pages contains harmful content to the children which can be blocked with Parental Control
- ✓ Blocked content customizable for different age groups: Small children, Teenager and Adult
- ✓ Access to harmful content is automatically blocked
- ✓ Blocking is done based on the site categorization (14):
  - ✓ Adult, chat, dating, drugs, gambling, hate, sport, travel, violence, weapons, Webmail, forum, blogs, social networking
- ✓ Reputation and the category is checked from the F-Secure's reputation service



[more >>](#)

# PROTECTION SERVICE FOR MOBILE



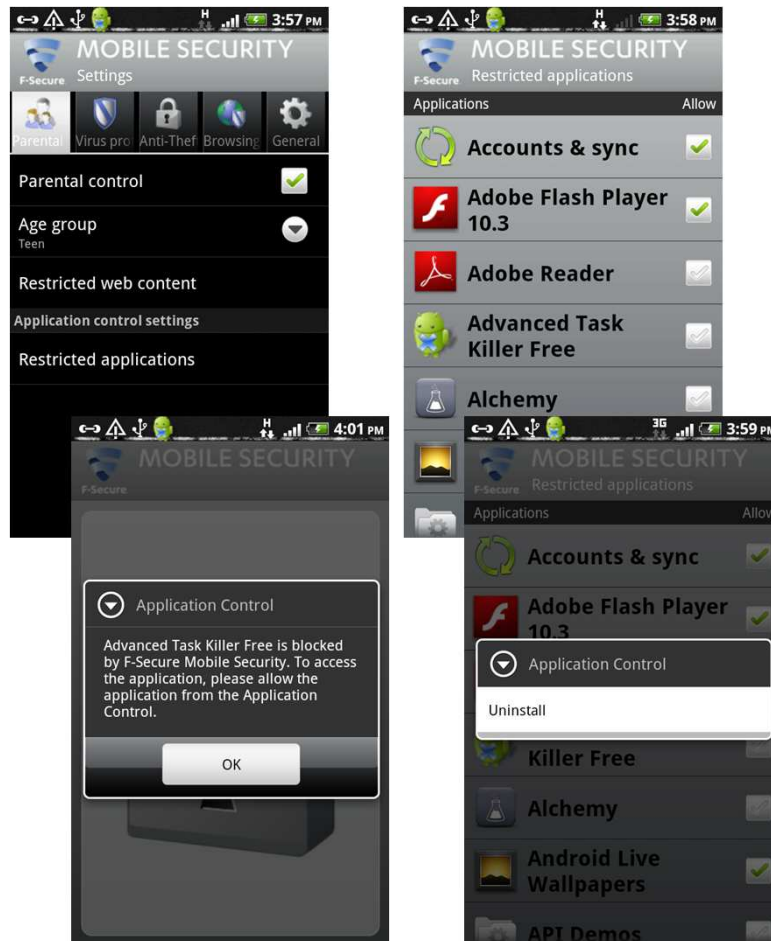
## Parental Control (II)

- ✓ **LocationControl** helps parents to locate their children or phone
- ✓ **Parents can monitor** remotely **from any phone** where the children are located at any time by sending the locate command to the phone where PSM is installed.
- ✓ **Self-management portal** enables even better monitoring of the child's location.



SYMBIAN

# PROTECTION SERVICE FOR MOBILE

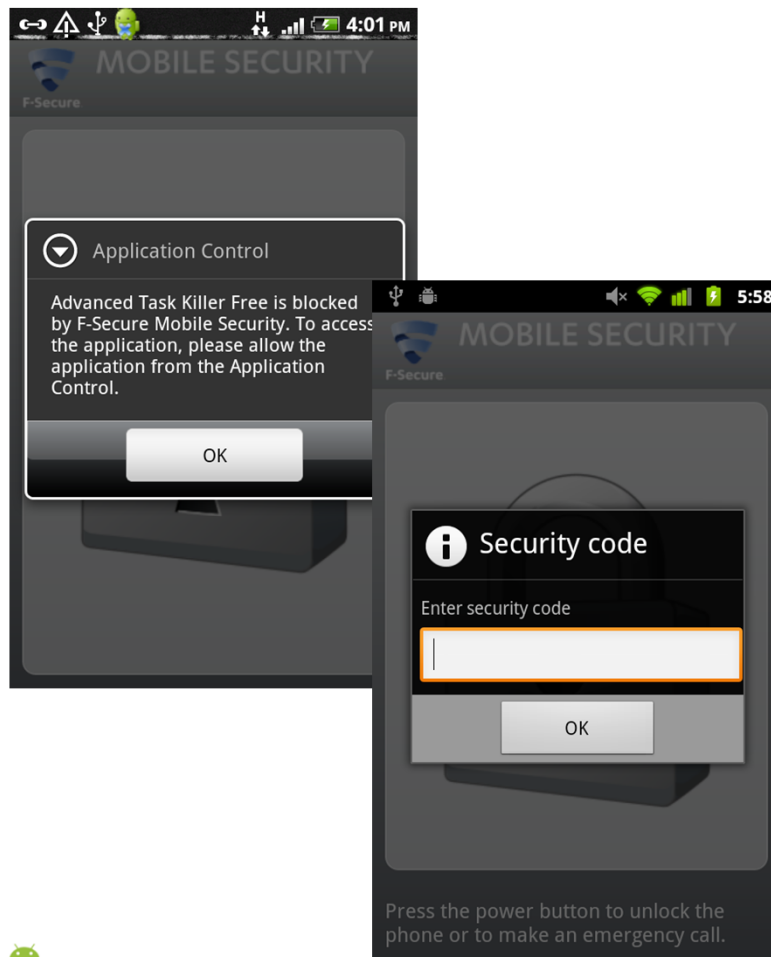


Screenshots are from the beta version. Strings and other small details may be subject to change before the general availability.

## Parental control (III) **NEW!**

- ✓ **Application control** enables the parents to control the child's use of the installed applications
  - ✓ Application control shows a list of installed applications. The parent may simply select the applications which are inappropriate for the child to use.
  - ✓ Parent may also easily uninstall the undesired applications from the list.
  - ✓ When taking the application control in use, by default all the existing applications are allowed, and the new applications require authorization by the parent.
  - ✓ When the child tries to access applications which have been restricted by the parents, the child is shown a dialog.
  - ✓ The settings are password protected so only the parent may change the allowed applications list.
  - ✓ Application control feature also improves the enforced use of the safe browser as the use of other browsers may be restricted.

# PROTECTION SERVICE FOR MOBILE



## Parental control (IV) **NEW!**

- ✓ **Enforced security** makes sure that the controls parents have set will be applied.
- ✓ Closing of the security or uninstalling requires the password defined by the parent
- ✓ Changing of the client application settings requires parent's authorization
- ✓ Changing of certain device settings requires parent's authorization
- ✓ Use of unsecured browsers is prevented so user may only access the sites which are not considered as harmful for the user



# PROTECTION SERVICE FOR MOBILE

Call and messaging manager

# PROTECTION SERVICE FOR MOBILE

**NEW!**



## Safe contacts

- ✓ **Safe contacts** is both a parental control and a generic feature for filtering the unwanted communication.
- ✓ The call and messaging manager is capable of blocking both incoming SMS, MMS, and calls, and outgoing calls.
- ✓ The filtering is based on the blacklist created by the user or the parent. User may simply add the phone numbers in the blacklist to prevent the unwanted calls or messages.
- ✓ User or parent may define the type of communication to block e.g. calls, and/or messages, and the direction.
- ✓ The blocked communication attempts are logged.

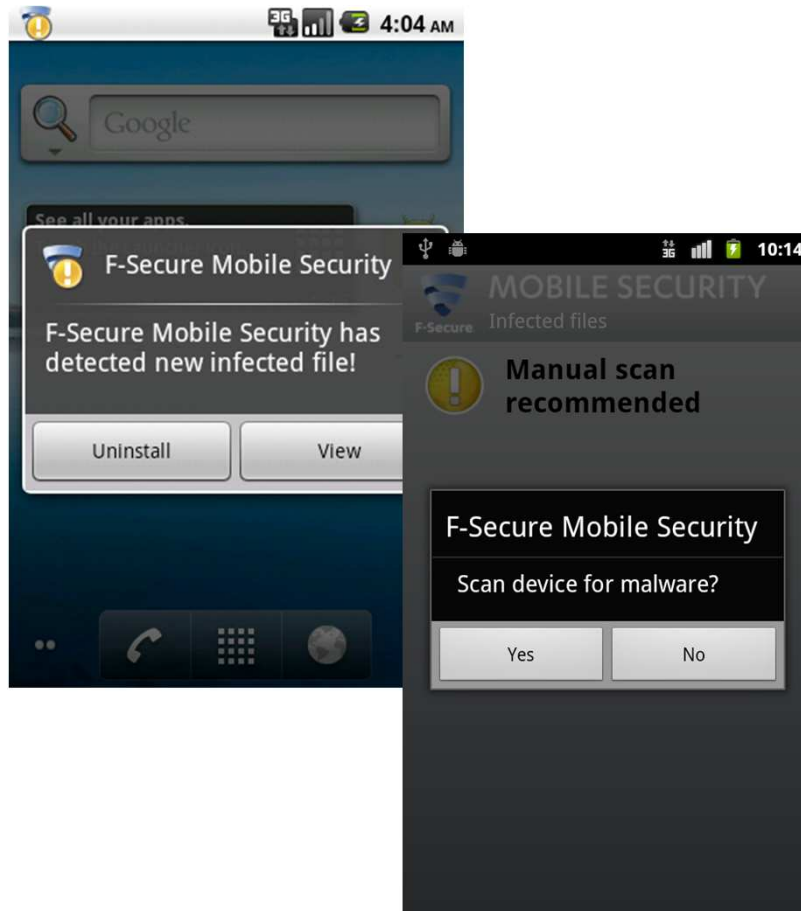




# PROTECTION SERVICE FOR MOBILE

Malware protection

# PROTECTION SERVICE FOR MOBILE



## Malware protection (I)

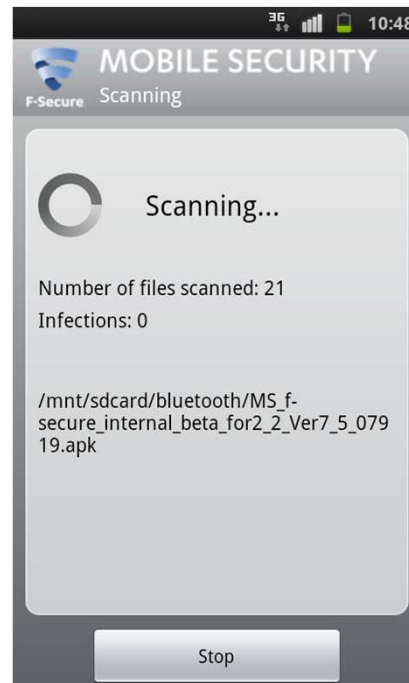
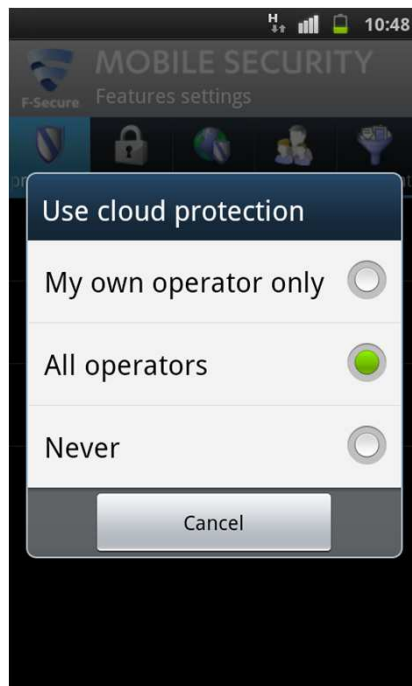
- ✓ **Protection** against harmful content like viruses, trojans, spyware, key loggers etc.
- ✓ In the Android environment all application are scanned before they can be run - upon installation
- ✓ User may also execute on-demand scanning any time to scan the device and the data against potentially harmful content
- ✓ Generic detections enable recognition of variants of the known malware without adding new detections in the database
- ✓ Symbian and Windows Mobile operating systems allow file system hooking. These products contain true realtime scanning capabilities where all file events are scanned.



SYMBIAN



# PROTECTION SERVICE FOR MOBILE

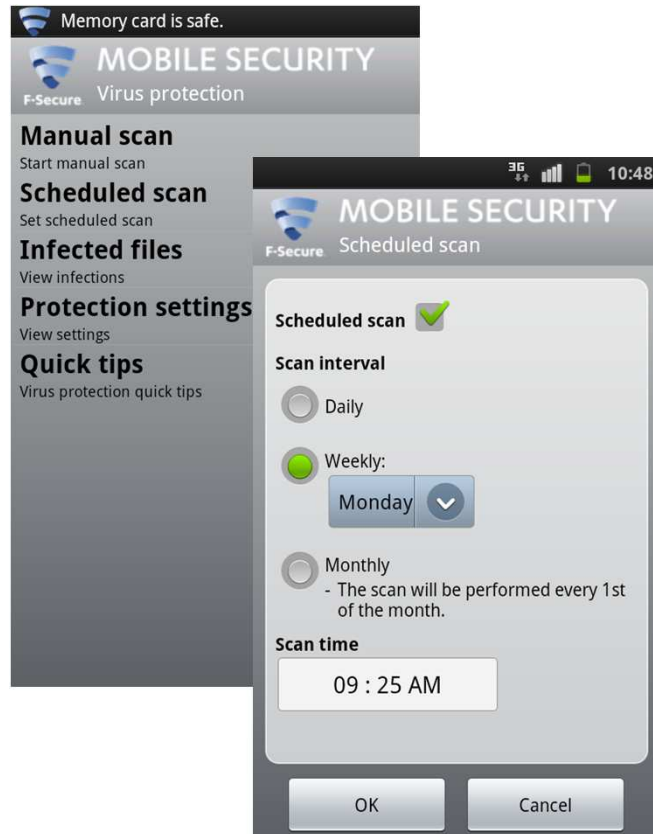


## Malware protection (II) **New!**

- ✓ **Cloud based scanning** enables fastest response times to changes in the threat landscape
- ✓ In order to respond to the increasing malware situation on the Android platform, F-secure is adding the next generation scanning technology already offered on the PC side.
- ✓ Cloud based scanning enables simple application reputation checks from a master database which is far too large to be maintained in the client application's database.
- ✓ F-Secure automatically collects reputation data and applications from various sources. Applications and their reputation are analyzed by a tireless, intelligent system that makes millions of classification decisions every day.
- ✓ The system enables immediate reputation changes, and does not require user to update the database. The database is always up-to-date.



# PROTECTION SERVICE FOR MOBILE



## Malware protection (III) **New!**

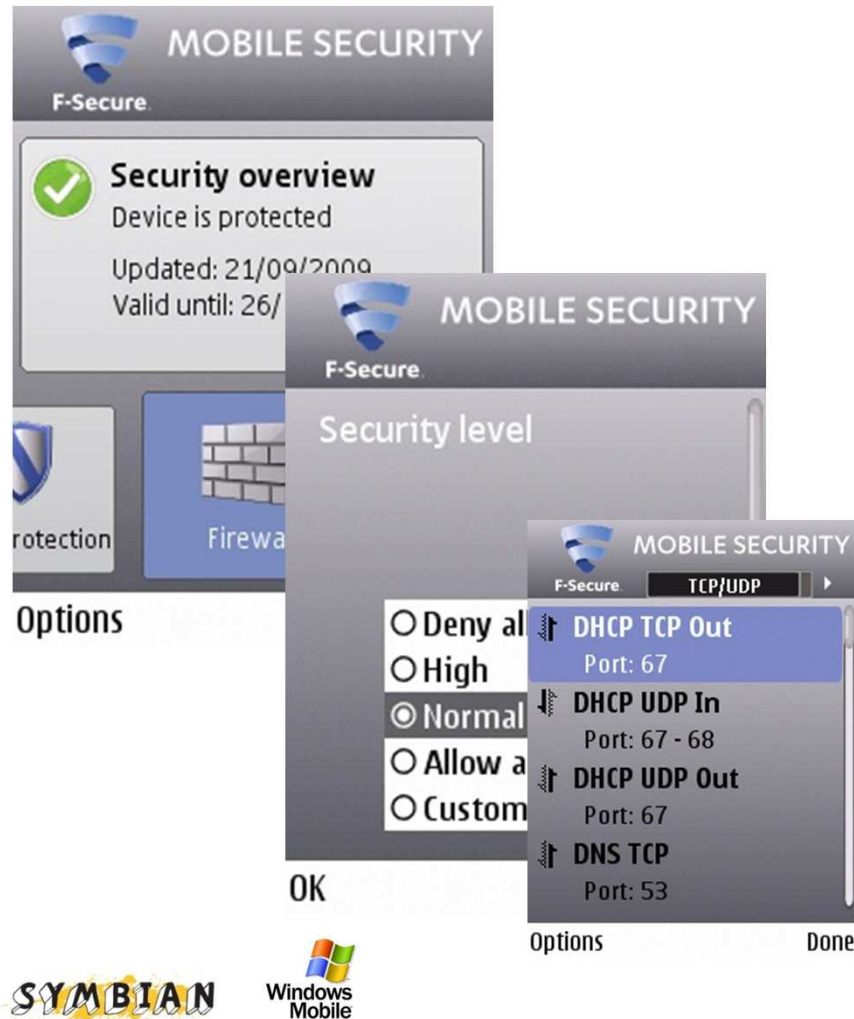
- ✓ **Scheduled scanning** enables scheduling of the on-demand scanning
  - ✓ Use may define the scanning interval daily, weekly or monthly
  - ✓ Scheduled scanning happens in the background, and does not interfere with device's normal functionality
  - ✓ Scheduled scanning utilizes F-Secure's next generation scanning platform with the combination of the local and cloud based scanning
  - ✓ If something is found in the scheduled scanning, user is notified to take action



# PROTECTION SERVICE FOR MOBILE

Personal firewall

# PROTECTION SERVICE FOR MOBILE



## Personal firewall

- ✓ **Protects against unwanted connection attempts**
- ✓ Customizable firewall makes the device safe against mobile worms and hackers
- ✓ Protection for all Internet connections (GPRS, UMTS, Wi-Fi, WLAN)
- ✓ Pre-defined firewall profiles enable easy selection of desired firewall protection level
- ✓ Stateful packet inspection enables conditional firewall rules

# PROTECTION SERVICE FOR MOBILE

Automatic updates

# PROTECTION SERVICE FOR MOBILE

---



PROTECTION SERVICE FOR MOBILE

## Automatic updates

- ✓ **Security is as good as the latest update**
- ✓ Includes unique 2-layer update mechanism
- ✓ Automatically retrieves the newest malware definitions and updates
- ✓ An additional SMS update mechanism patented by F-Secure ensures that critical malware fingerprints are received even when a data connection is not available. Available for Symbian and Windows Phone.
- ✓ F-Secure's state-of-the-art international Data Security Lab makes sure that new mobile malware is discovered quickly and the fingerprints are speedily delivered to customers.
- ✓ F-Secure has a track record for the fastest protection in the online world.






SYMBIAN



BlackBerry



# Mobile Security and Backup Availability on Different Devices

	Antivirus/ Antispyware	Antitheft	Antitheft User Portal	Browsing Protection	Parental Control	Firewall	Safe Contacts	Safe Apps	Mobile Backup
 android	Cloud security Dec/2011		Q4/2011						
 BlackBerry			Q4/2011	Q4/2012	Q4/2012				
iPhone		Q2/2012 <sup>1)</sup>	Q2/2012	Q1/2012	Q1/2012				
 Windows Mobile			Q4/2011						
symbian			Q4/2011						



1) Feature scope confirmed later due to the closed nature of iOS